

Brandywine (85A-032)

Brandywine is a late-nineteenth-century railroad village located in southern Prince George's County. According to tradition, Brandywine was named after the Revolutionary War's Battle of Brandywine by a member of the Early family, one of the original landowners in the area.¹ Brandywine developed as a small crossroads village at the convergence of an old stagecoach road (now Route 381) and old Indian Head Road. Martenet's map of 1861 shows only a few improvements in the Brandywine community. Homes of the Early, Robinson, Burgess, Gibbons, and Cooksey families are documented, along with William H. Early's store and post office, and a blacksmith shop located to the west of the village.²

The establishment of the Popes Creek Line of the Baltimore and Potomac Railroad in the 1870s brought new development to the area.³ In 1872, William H. Early purchased a 42-acre tract of land that ran parallel to the railroad tracks and was located north and south of Brandywine Road. This small parcel of land became the center of the village of Brandywine and was soon populated by additional residences, stores, and a hotel.⁴ The 1878 Hopkins map shows the new residential buildings in the small village, along with the addition of a schoolhouse and several stores. The most significant improvement was the Baltimore and Potomac Railroad's tracks through Brandywine. The Hopkins map also shows plans for the development of Brandywine City, a planned development that was to take advantage of new transportation routes provided by the railroad. Because passenger service through Brandywine never prospered, the plans for Brandywine City never materialized.⁵ A second railroad line constructed by the Southern Maryland Railroad Line in the 1880s brought additional residents to the village. The population of Brandywine peaked in 1882 with approximately 250 residents; however, despite the construction of the second rail line, Brandywine's population dropped to 60 residents by the early twentieth century.⁶

The Early family remained prominent residents of Brandywine. After the death of William H. Early in 1890, his 3,000 acres of land were divided among his children, who soon built high-style residences facing the railroad tracks along Cherry Tree Crossing Road. Members of the Early family were also largely responsible for the construction of the Bank of Brandywine (PG: 85A-032-30) and the Chapel of the Incarnation (PG: 85A-032-27), two important local landmarks.⁷ The family retained ownership of the William H. Early Store (PG: 85A-032-09) through the mid-1950s and some family descendants still live in the Early residences.

There are three Historic Sites in Brandywine:

- PG: 85A-032-09, William W. Early House (NR), 13907 Cherry Tree Crossing Road
- PG: 85A-032-27, Chapel of the Incarnation (Episcopal) (NR), 14070 Brandywine Road
- PG: 85A-032-30, Old Bank of Brandywine, 14110 Brandywine Road

¹ Sue Anne Pressley, "Just 25 Miles From City, Brandywine's Still Rural," *Washington Post* (3 October 1987).

² Simon J. Martenet, "Atlas of Prince George's County, Maryland, 1861, Adapted from Martenet's Map of Prince George's County, Maryland" (Baltimore: Simon J. Martenet C.E., 1861).

³ Prince George's County Community Renewal Program, *Neighborhoods of Prince George's County* (1974), 430-431.

⁴ Susan G. Pearl, "Brandywine," Maryland Historical Trust State Historic Sites Inventory Form (1986, revised 1987), 8:2.

⁵ G.M. Hopkins, "Atlas of Fifteen Miles Around Washington, Including the County of Prince George Maryland" (Philadelphia: G.M. Hopkins, C.E., 1878).

⁶ Pearl, "Brandywine," 8:2-3.

⁷ Pearl, "Brandywine," 8:3.

There are three Historic Resources in Brandywine:

- PG: 85A-032-10, W.B. Early House, 13904 Cherry Tree Crossing Road
- PG: 85A-032-11, W.H. Early Store, 14034 Brandywine Road
- PG: 85A-032-28, Marian Early Bean House, 13902 Cherry Tree Crossing Road

Windshield Survey

A windshield survey of Brandywine was conducted in July 2007. The survey area remains relatively unchanged since the last survey by M-NCPPC in 1987. The survey focused on structures on both sides of Brandywine Road, Missouri Road, and Cherry Tree Crossing Road. The topography of Brandywine is relatively flat. Buildings along Brandywine Road are a mix of commercial and residential structures set close to the road. Many of the commercial buildings are former single-family residences that have been rehabilitated to serve as commercial buildings. Likewise, a few commercial buildings have been rehabilitated to function as residences, such as the Bank of Brandywine building. The buildings in Brandywine date from the 1870s to the 1970s and reflect a variety of styles including various interpretations of Queen Anne, Colonial Revival, Mission, Craftsman, and Modern Movement. Common building forms include I-houses, rectangular plans, American Foursquare, bungalows, and ranch houses. The dwellings along Cherry Tree Crossing Road retain the most integrity. Constructed by members of the Early family, these houses remain some of the largest and most high-styled buildings in Brandywine. The buildings are oriented to face the railroad tracks rather than the road, indicating the importance of the railroad in the late nineteenth century. Modern subdivisions dating from the 1970s to the 1990s surround the survey area.

Historic District Evaluation

In 1997, the Maryland Historical Trust (MHT) did not recommend Brandywine as a historic district. MHT expressed concern regarding the boundaries, significance, and integrity of the district.

However, a small portion of the Brandywine survey area meets Prince George's County criteria for designation as a historic district. The properties at the intersection of Brandywine Road and Cherry Tree Crossing Road are significant for their association with the Early family, a prominent local family that was integral to the development of Brandywine. This small contiguous district has not been impacted by twentieth-century commercial or suburban growth that affects other areas of Brandywine. This enclave of buildings is representative of the rural railroad village and the early economic and commercial growth related to the expansion of the railroad, and includes excellent examples of a variety of domestic architecture styles. Styles within this small district include elaborate Queen Anne designs, and more modest Colonial Revival style dwellings. Contributing structures include 14034 Brandywine Road (W.H. Early Store), 13907 Cherry Tree Crossing Road (W.H. Early House), 13904 Cherry Tree Crossing Road (W.B. Early House), 13900 Cherry Tree Crossing Road (Charles S. Early House), and 13902 Cherry Tree Crossing Road (Marian Early Bean House).

The Early Historic District meets the following Prince George's County Criteria for designation as a local historic district:

- (1)(A)(i) – This district is representative of a rural railroad village, as well as early economic, commercial, and residential growth related to the expansion of the railroad in Prince George's County.

- (1)(A)(iii) – The Early family was the most prominent family in Brandywine, and was largely responsible for the establishment, growth, and development of the village.
- (1)(A)(iv) – The historic district exemplifies the economic heritage of the County with its association with the expansion of the railroad. By orienting their houses to face the railroad tracks rather than the road, the Early family indicated the importance of the railroad to the success of their small village.
- (2)(A)(i) – The buildings within the boundaries embody distinct characteristics of the Queen Anne- and Colonial Revival-style buildings of the late nineteenth and early twentieth century.
- (2)(A)(iv) – Taken as a whole, these structures are indicative of the growth and success of both a local family and the village they established.
- (2)(A)(v) – The buildings constructed by the Early family have been distinct features along Cherry Tree Crossing Road in Brandywine. They represent the largest and some of the most high-style residential buildings in Brandywine.

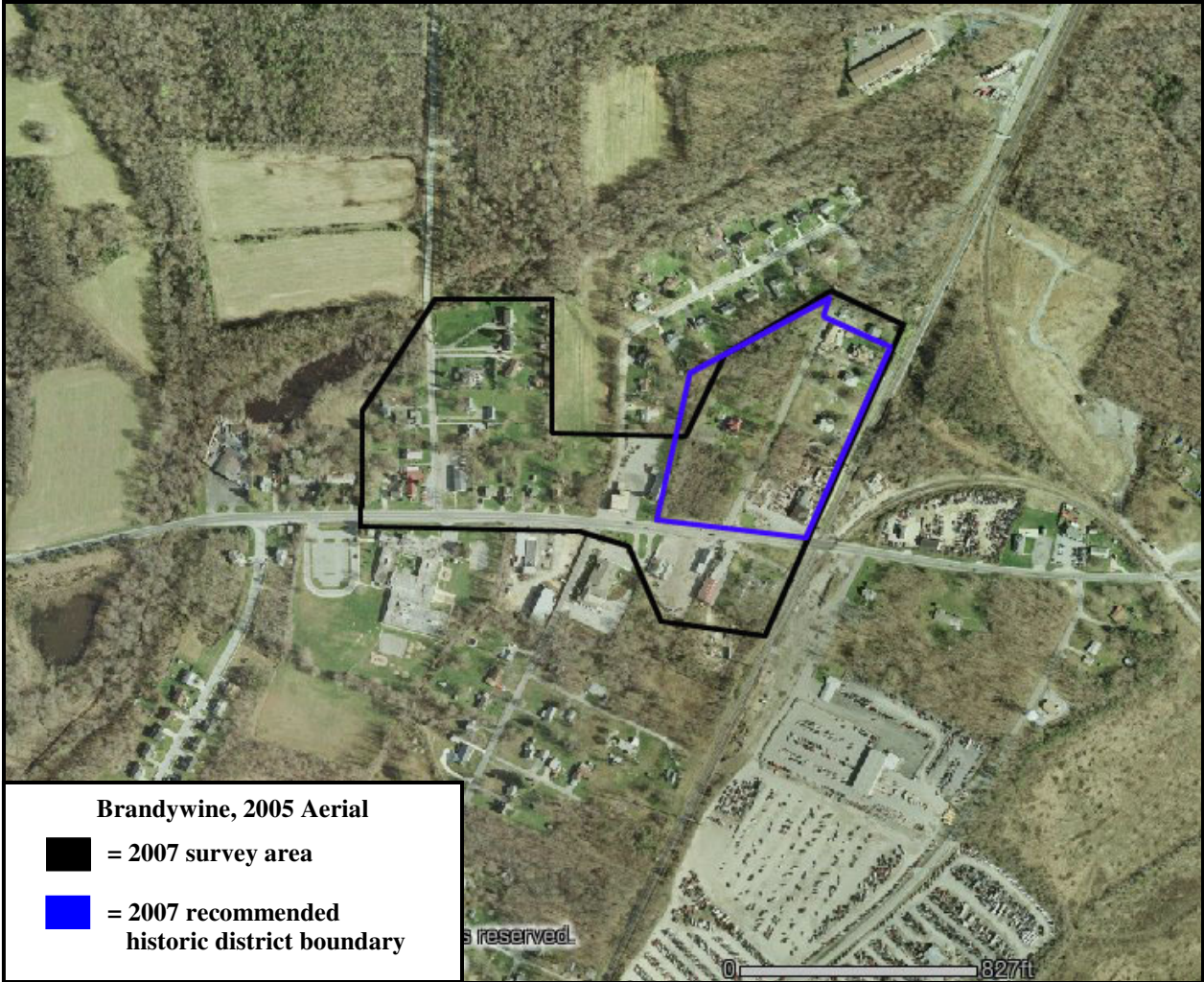
Brandywine also meets the following National Register criteria for designation as a historic district:

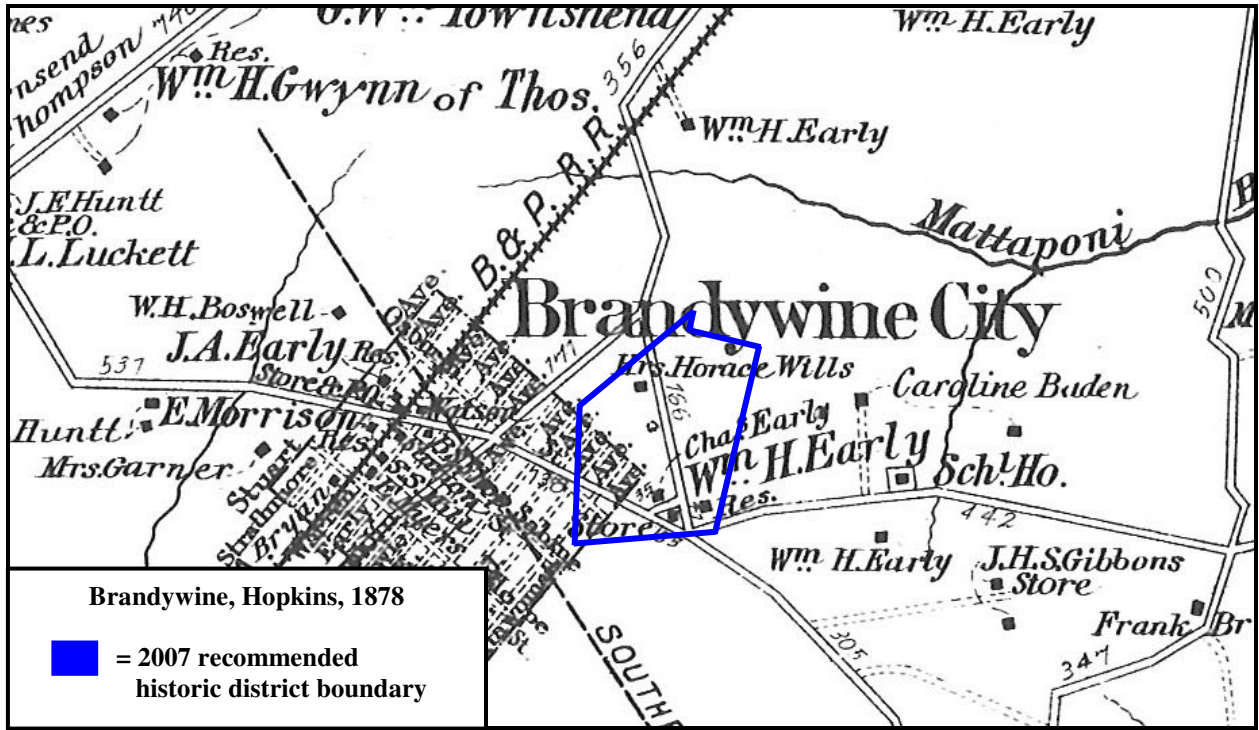
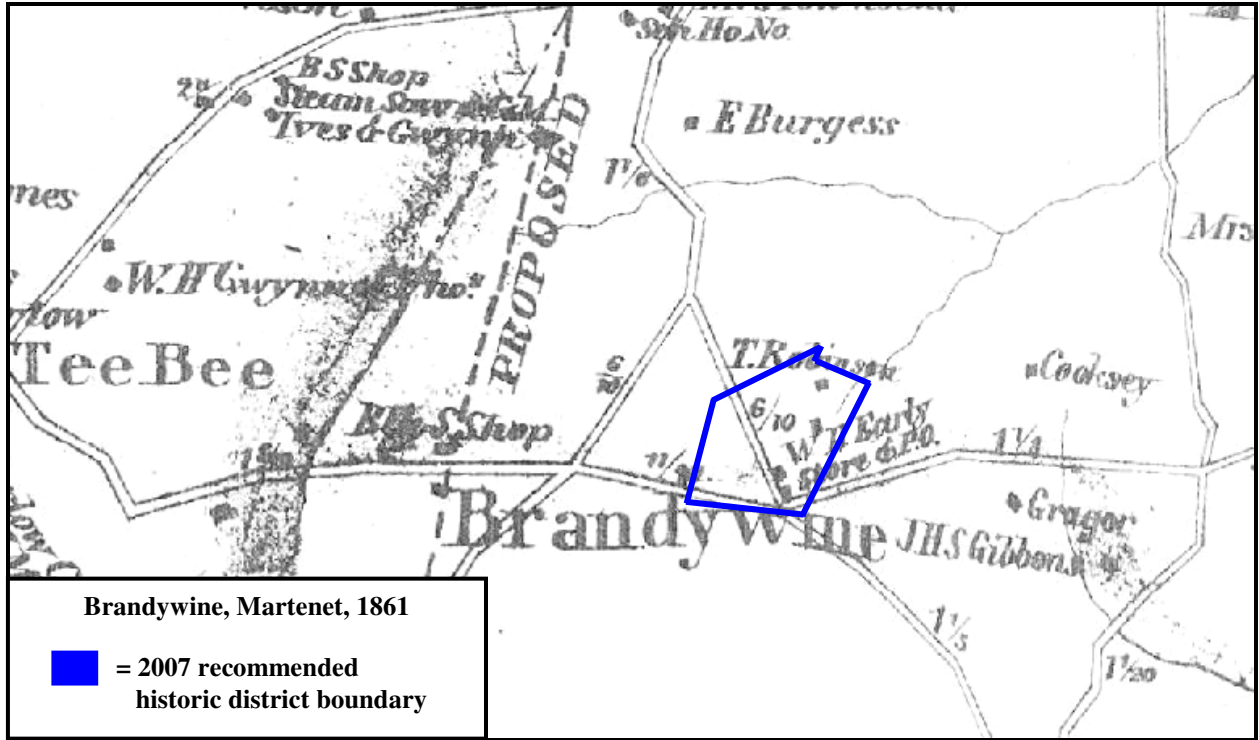
Criterion A – Brandywine is representative of a rural railroad village and the early economic, commercial, and residential growth related to the expansion of the railroad in Prince George’s County and the United States. This small contiguous district has not been impacted by twentieth-century commercial or suburban growth that affects other areas of Brandywine.

Criterion C – Brandywine retains distinct and high-style examples of the Queen Anne- and Colonial Revival-style buildings of the late nineteenth and early twentieth century. This collection of buildings is indicative of the growth and success of both a local family and the village they established.

Although some of the buildings have been altered by additions and have lost minimal integrity of materials, the structures retain their integrity of location, design, setting, workmanship, feeling, and association.

Prepared by EHT Tracerics, Inc.
November 2007









Looking east, W.H. Early Store (PG: 85A-032-11), 14034 Brandywine Road (*EHT Traceries*, 2007)



Looking southwest, 14127-14125 Brandywine Road (*EHT Traceries, 2007*)



Looking northwest, William W. Early House (PG: 85A-032-09), 13907 Cherry Tree Crossing Road (*EHT Traceries*, 2007)



Looking east, W.B. Early House (PG: 85A-032-10), 13904 Cherry Tree Crossing Road (*EHT Traceries*, 2007)



Looking northwest, W.B. Early House (PG: 85A-032-10), 13904 Cherry Tree Crossing Road
(*EHT Traceries*, 2007)



Looking east, 13810 Cherry Tree Crossing Road (*EHT Traceries*, 2007)



Looking northeast, 13900 (Charles S. Early House) -13902 Cherry Tree Crossing Road (Marian Early Bean House, PG: 85A-032-28) (*EHT Traceries*, 2007)



Looking northwest, Marian Early Bean House (PG: 85A-032-28), 13902 Cherry Tree Crossing Road (*EHT Traceries*, 2007)



Looking northwest, 14110 (Old Bank of Brandywine, PG: 85A-032-30) - 14106 Brandywine Road (Joanna Canter House, MIHP: 85A-08) (*EHT Traceries*, 2007)



Looking southeast, 14105 Brandywine Road (*EHT Traceries*, 2007)



Looking northwest, 14068-14070 Brandywine Road (Chapel of the Incarnation, PG: 85A-032-27) (*EHT Traceries*, 2007)